



# Briefing to County Council

August 25, 2020

**David Schuld**  
COVID-19 Response and Recovery



# Health Response Data Update

# Today's Snapshot / Previous Report (1)

	This Week	Last Week
Case Rate Increase	0.536%	0.455%
Doubling Rate	130 Days	150 Days
Hospitalization Rate	5.767%	5.779%
Mortality Rate	0.979%	0.969%
Number of Tests Completed	257,119	244,205
Weekly Test Total	11,078	12,887
Positivity Rate	8.90%	8.95%

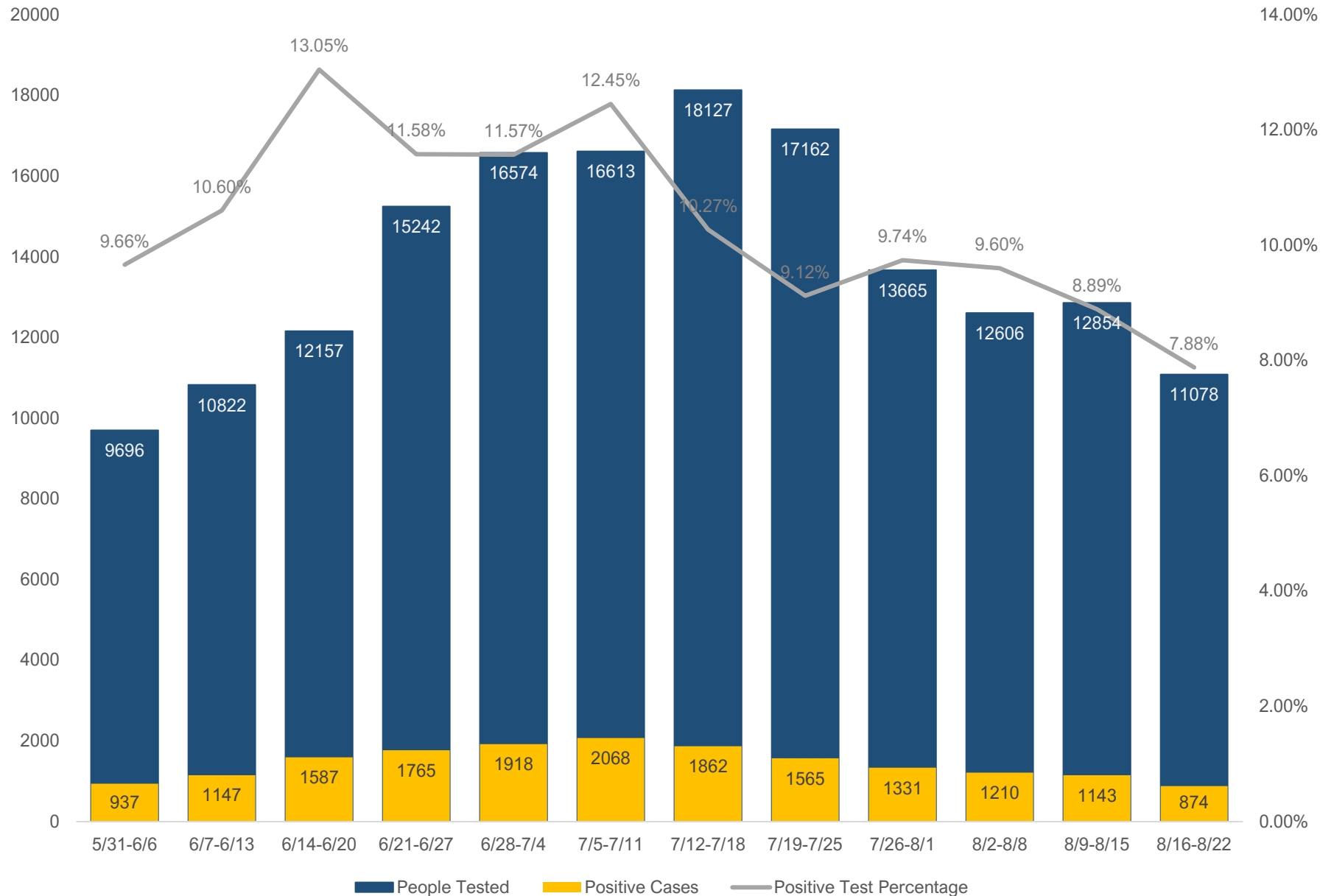
Most recent data was captured on 8/23 and 8/16. Data is cumulative.

# Today's Snapshot / Previous Report (2)

	This Week	Last Week
<b>Total Cases</b>	<b>22,888</b>	<b>21,874</b>
<b>Estimated Active Cases</b>	<b>2,150</b>	<b>2,192</b>
<b>Estimated Recovered Cases</b>	<b>20,514</b>	<b>19,470</b>
<b>Fatalities</b>	<b>224</b>	<b>212</b>
<b>Hospitalized (Current / Total)</b>	<b>161 / 1,320</b>	<b>179 / 1,264</b>

Most recent data was captured on 8/23 and 8/16. Data is cumulative.

# Weekly Testing and Positivity Rate Analysis



# Top 10 Confirmed Cases and Crude Rate by ZIP Code (Current: 8/3 – 8/16)

Confirmed Cases by ZIP Code		Crude Rate by ZIP Code
84119 (167)	1	84113 (2040.82)
84120 (153)	2	84112 (603.32)
84096 (112)	3	84119 (309.78)
84081 (112)	4	84104 (295.97)
84116 (94)	5	84120 (293.65)
84129 (90)	6	84116 (268.26)
84118 (89)	7	84044 (265.90)
84128 (83)	8	84047 (247.53)
84047 (83)	9	84081 (234.55)
84104 (77)	10	84129 (233.95)

# Seven-Day Rolling Case Count

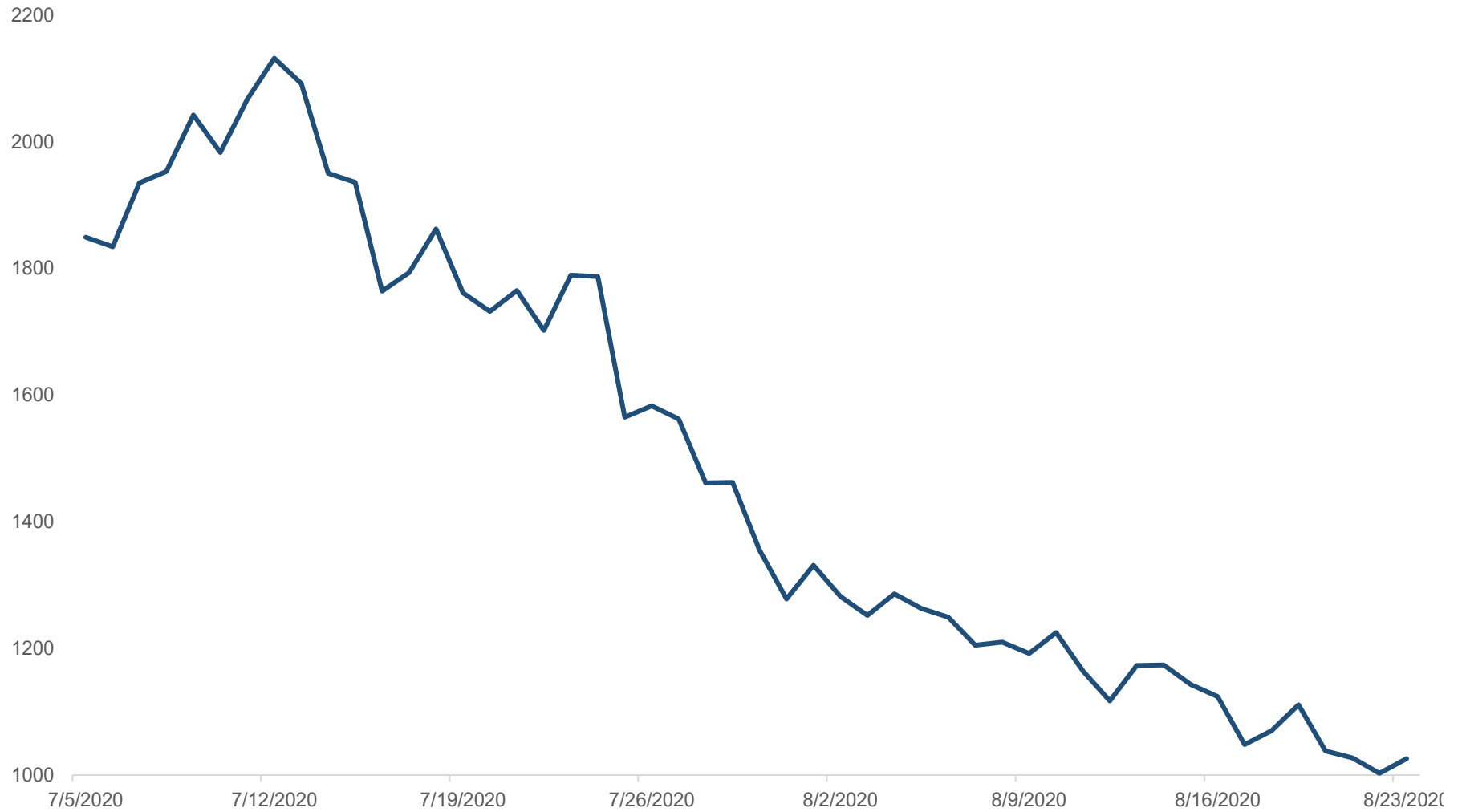
High

**2,132**  
7/6-7/12

Current

**1,026**  
8/17-8/23

 **52%**



Most recent data was captured on 8/23.

# Seven-Day Rolling Hospitalizations

High

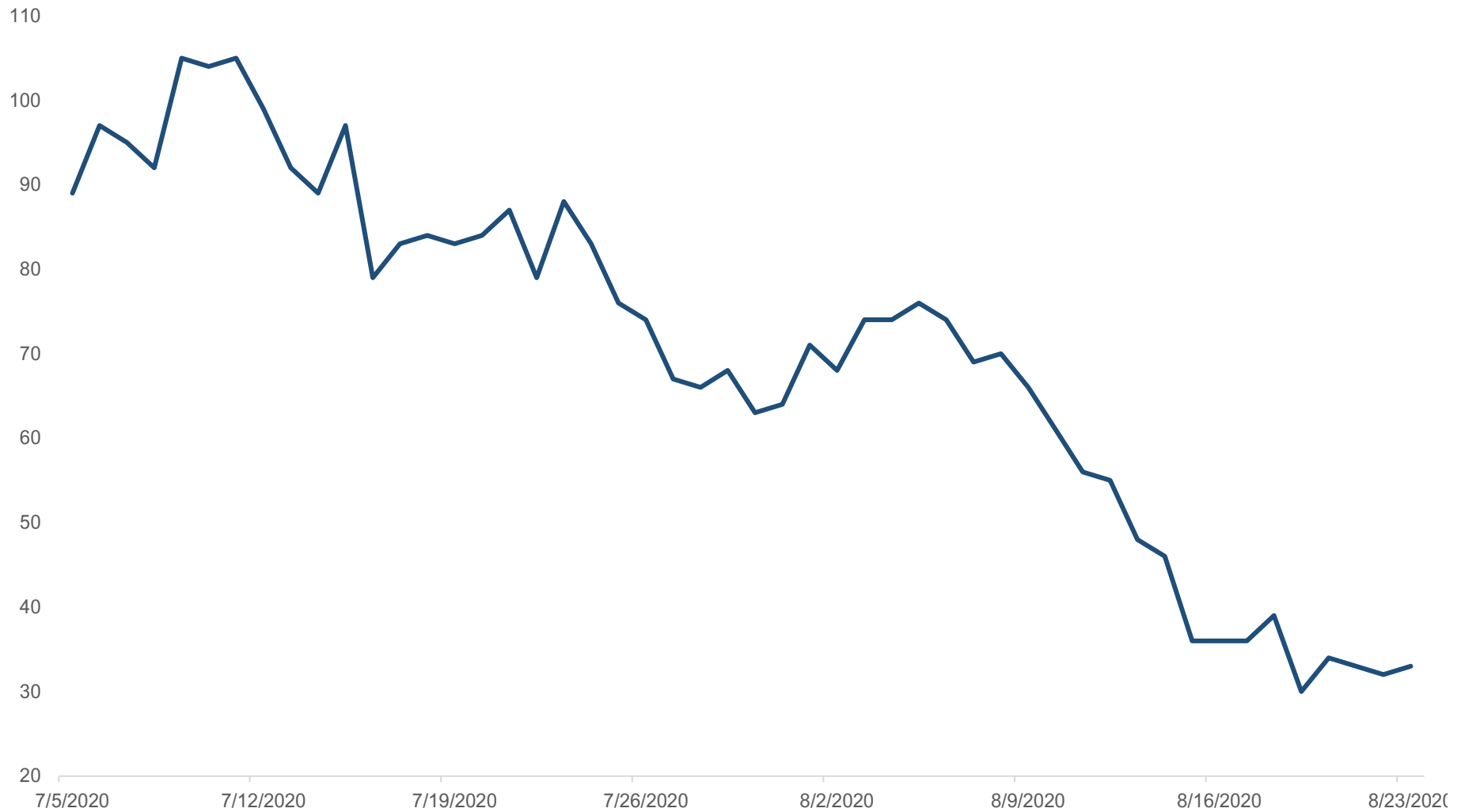
**104**  
7/5-7/11

Current

**33**  
8/15-8/21



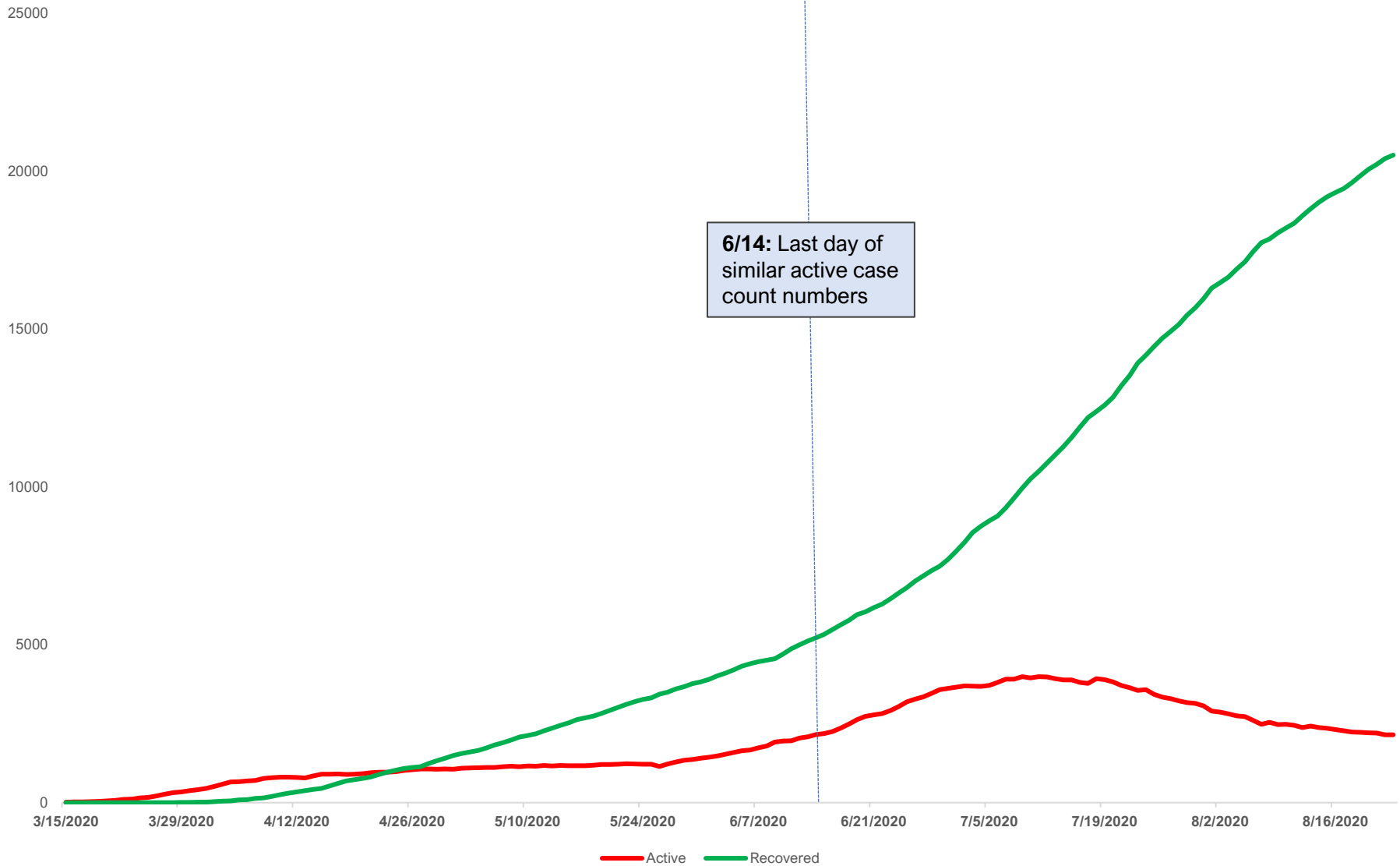
**68%**



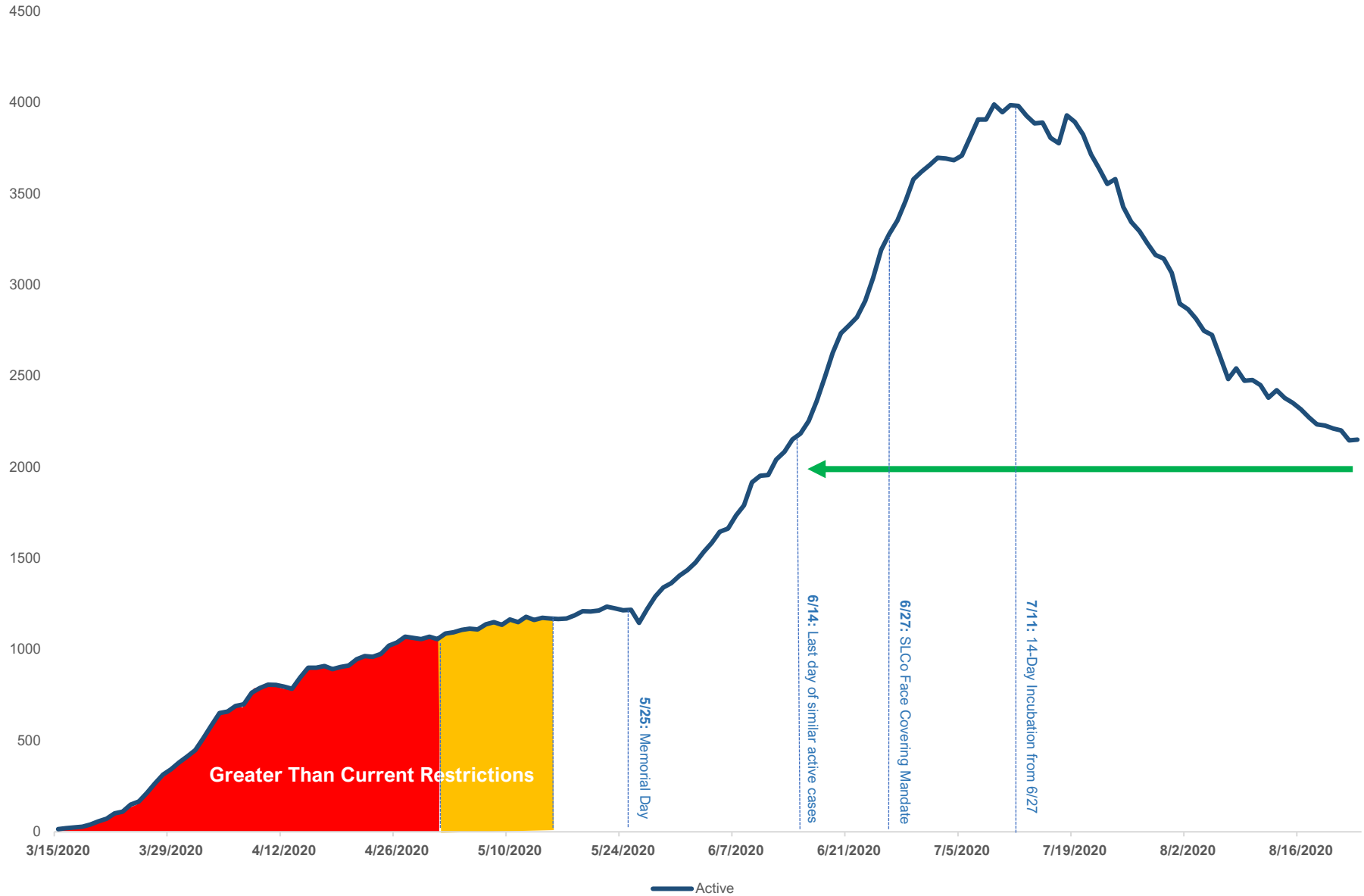
Most recent data was captured on 8/23.



# Salt Lake County Active / Recovered Trendlines



# Crushing the Curve



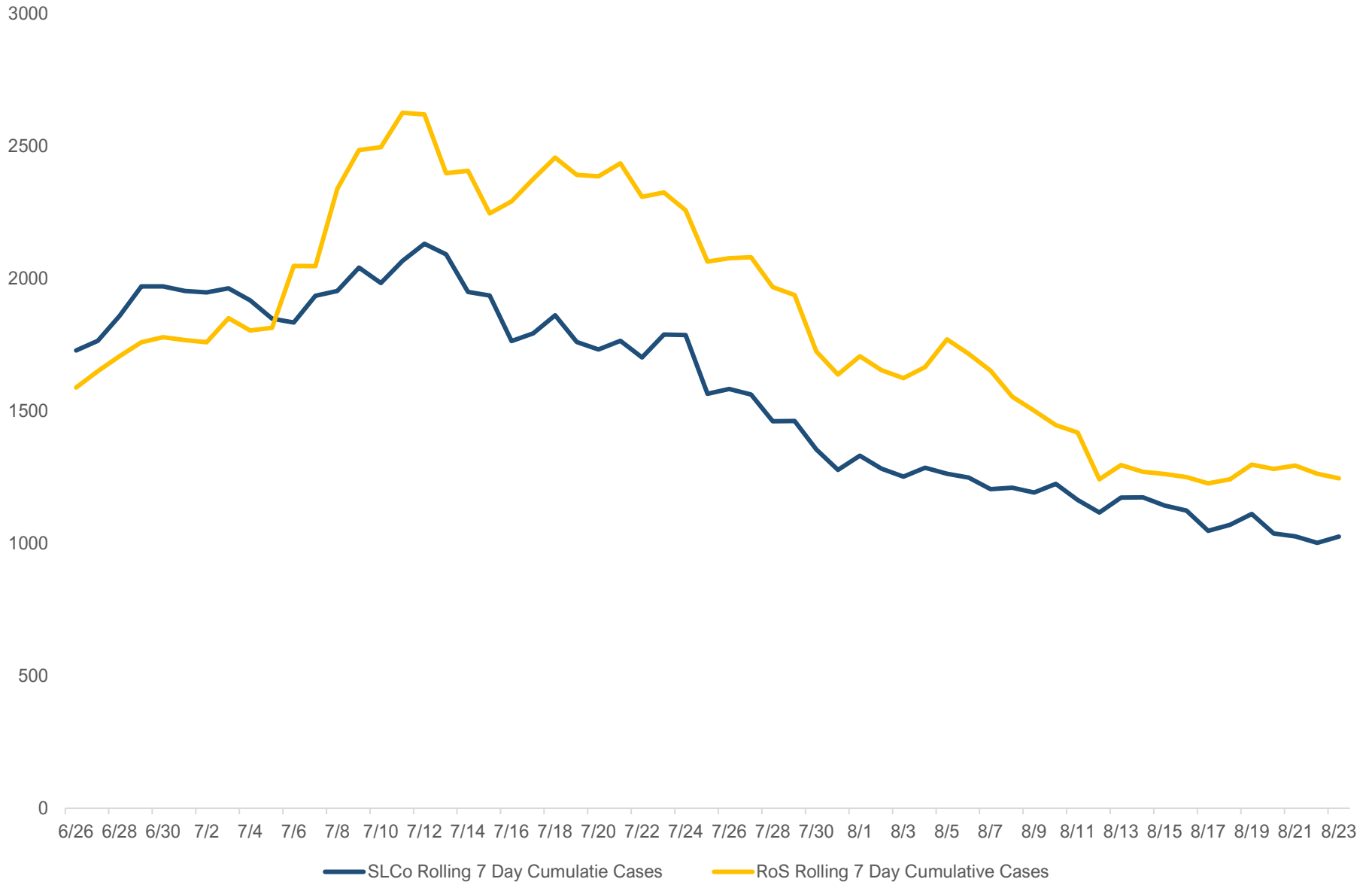


# **Preliminary Findings on Salt Lake County Face Covering Mandate**

# Context

- Face coverings have demonstrated as an effective tool to mitigate the spread of COVID-19 **when worn effectively**.
- Face coverings help contain small droplets that come out of your mouth and nose when speaking, sneezing, or coughing.
- Face coverings, along with social distancing, washing hands, and staying home when sick are important tools to reducing the spread of COVID-19 in Salt Lake County.
- Salt Lake County's face covering mandate went into effect on June 27.
- Since the face covering mandate took place, Salt Lake County has seen a reduction in the number of daily cases of COVID-19:
  - Seven-Day Rolling Case Count peaked at 2,131 between July 5-July 11
  - The most recent Seven-Day Rolling Case Count is 1,026, a 52% reduction from the peak
- **Seven-Day Rolling Hospitalizations continue to decrease as well, indicating a true reduction.**

# Seven Day Cumulative Cases: SLCo vs. Rest of Counties in Utah



# Initial Observation: July 2020

- Salt Lake County's COVID-19 Response conducted an initial observation of face coverings being worn in Salt Lake County between July 19-July 21.
- 1,431 total observations were made in Salt Lake County, Utah County, and Davis County.
- July's observations focused on signage upon entering a location and the number of employees and customers at locations wearing face coverings.

## Salt Lake County

Observation I (July 19-21) Findings

**100%**

**Observed Signage  
Upon Entering**

**98%**

**Total Wearing Face  
Coverings**

**96%**

**Customers Wearing  
Face Coverings**

**99%**

**Employees Wearing  
Face Coverings**

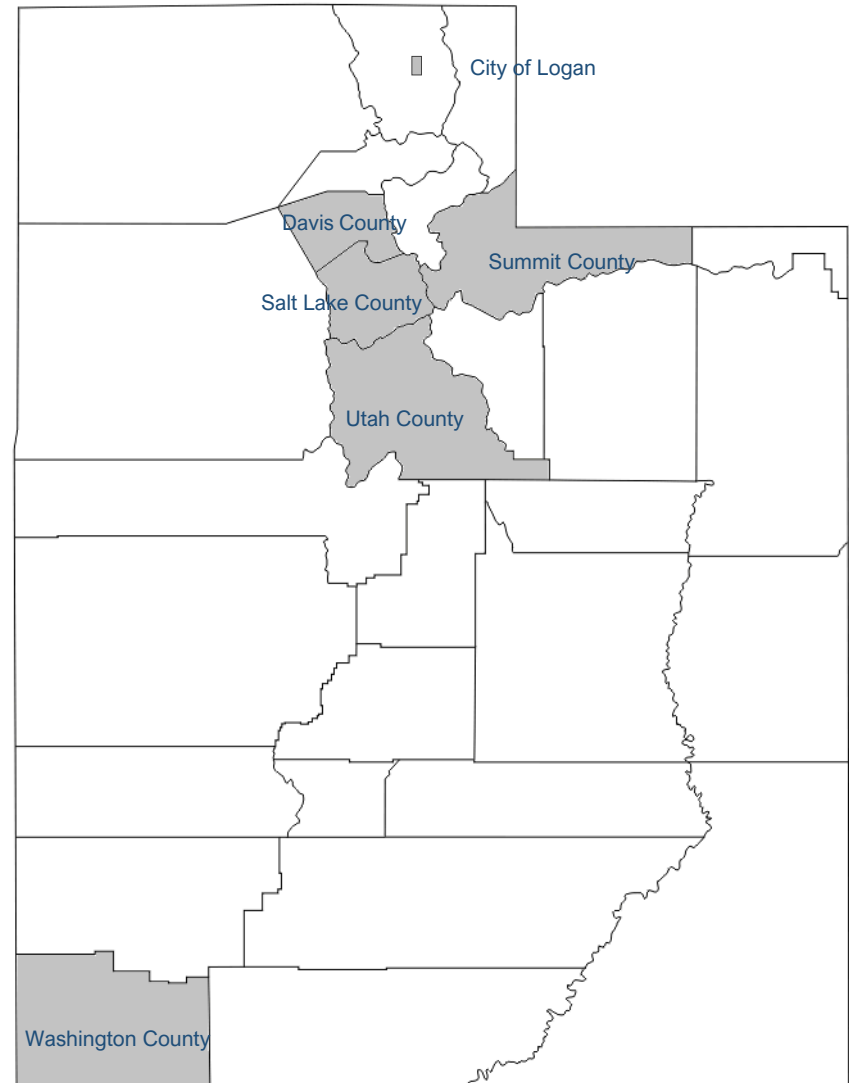
# Observational Design

- Team members of Salt Lake County's COVID-19 Response worked together to formalize a standard design for future observations.
- Standardization included:
  - Prescribed methodology for observations
  - Greater classification of location in observation
  - Age and gender observations
  - Inclusion of observing whether or face covering was worn properly or not

	Observation I	Observation II
Signage	Yes	No
Observation Locations	52	130
Number of Observations	1,088	2,874
Location Footprint Type	No	Yes
Customer / Employee Counts	Yes	Yes
Wearing of Face Coverings	Yes	Yes
Not wearing face coverings: Gender	No	Yes
Not wearing face coverings: Age Group	No	Yes
Standardized Counting Methods	Basic	Advanced
Designed Observational Locations	No	Yes

# Observation Area

- The area of observation represents jurisdictions where 70% of Utah's population.
- 130 locations with survey area selected:
  - Diverse set of facilities including grocery stores, home goods stores, sporting good stores, home improvement stores, and convenience stores
- This was the largest designed observation of face coverings in the state by number of observations and geography covered.
- ***Why such a large observation area?***  
The large area allows Salt Lake County COVID-19 Response to conduct more thorough analysis and comparisons with other jurisdictions.





# Preliminary Findings

## Salt Lake County

Observation II (August 14-17) Findings

**1**

**Observational Ranking (out of 6)**

**96.6%**

**Total Wearing Face Coverings (SLCo)**

**8%**

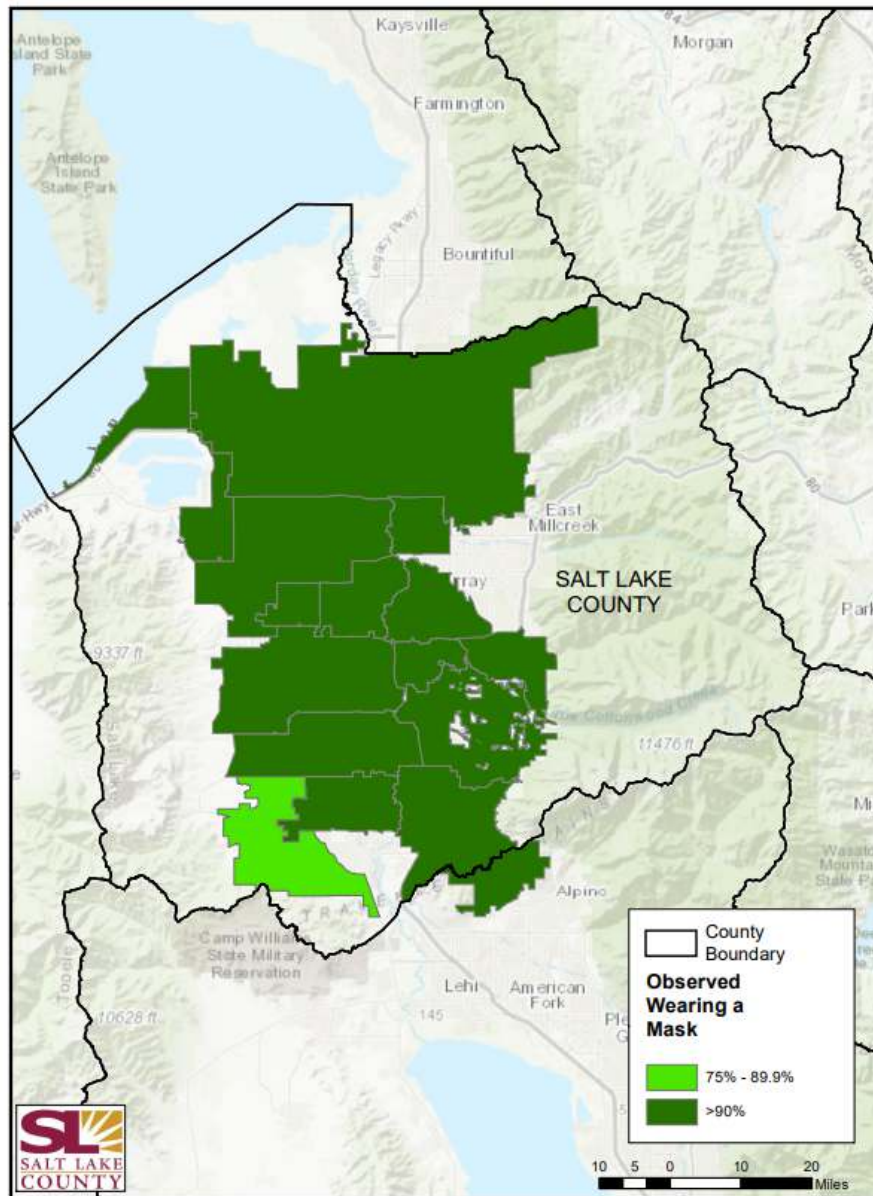
**Not Wearing Face Covering Correctly**

**14/15**

**Observation Sectors with >90% Face Coverings Worn**

**87.6%**

**Lowest Wearing of Face Coverings by Community (SLCo)**



# Further Analysis

- Observations are important for policy-level decisions and health-related analysis of how best to mitigate the spread of COVID-19 in Salt Lake County.
- Over the next few weeks **analysis will continue** including:
  - Incorrect wearing of face coverings by gender
  - Incorrect wearing of face coverings by age group
  - Further analysis of wearing face coverings by facility observed
  - Geographic analysis
- Salt Lake County COVID-19 Response will continue to conduct observations in wearing face coverings and its impact in mitigating COVID-19 over the Q4 2020.
- **Additional findings will be presented later this week.**

